

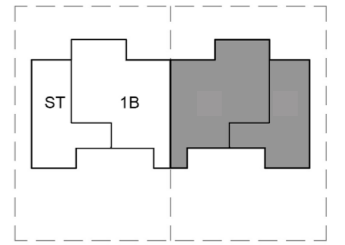


الغدیر  
alghadeer

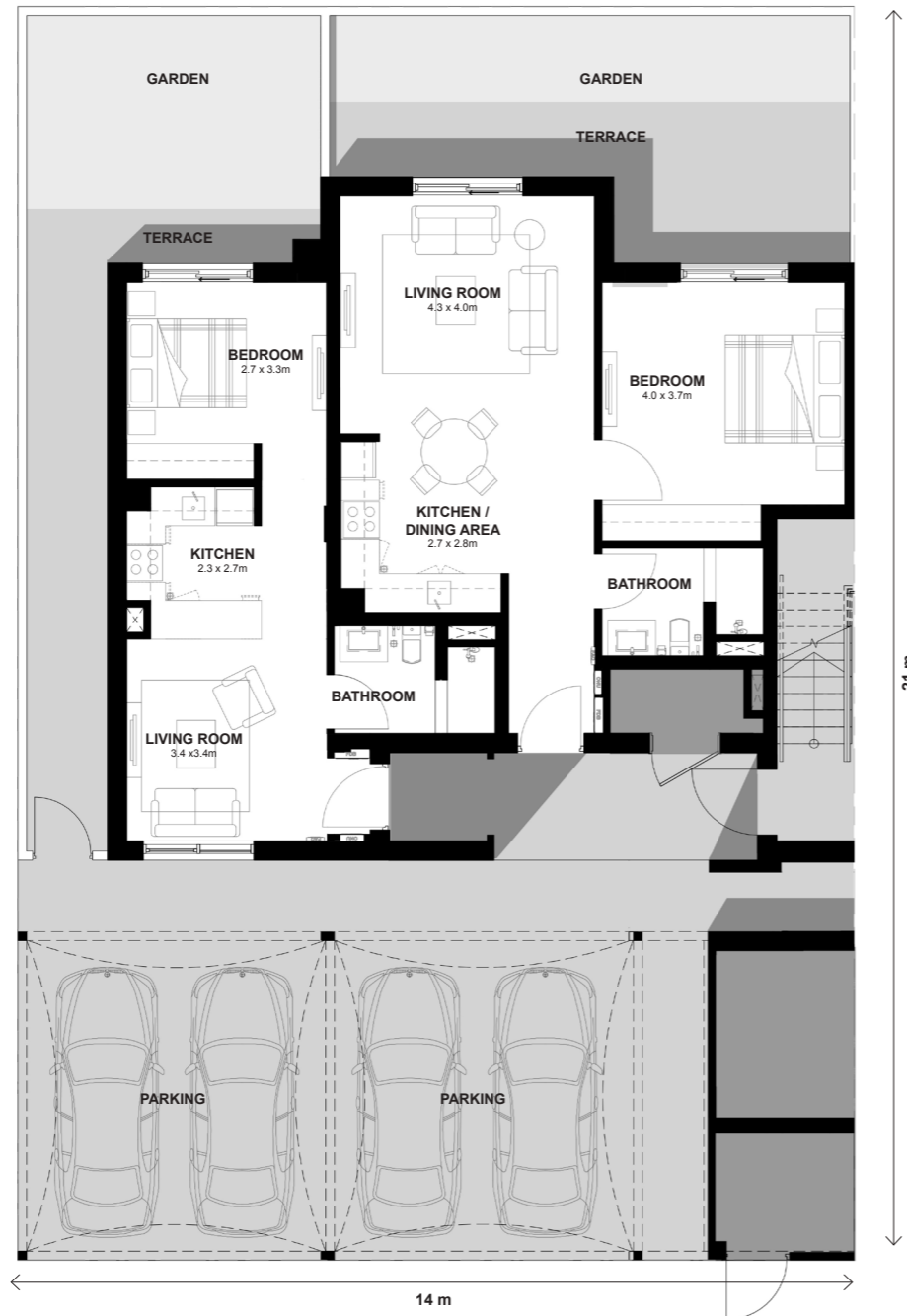
### Studio+1 Bed Maisonette

Ground Floor Plan

First Floor Plan



Key Plan



DISCLAIMER: Note that this floor plan was produced prior to the completion of construction and is indicative only and not to scale. Changes may be made during the development and areas, fittings, finishes and specifications are subject to change without notice in accordance with the provision of the contract of sale. The wardrobe and furniture depicted are not included with any sale and should not be taken to indicate the final positions of power points, TV connections and the like. Prospective purchasers must rely on their own enquiries. Bulkheads necessary for services and structure are not depicted.

STUDIO - MAISONETTE TOTAL AREA GF: 37.1 m<sup>2</sup>  
 MAISONETTE TOTAL AREA FF: 37.2 m<sup>2</sup>  
 1 BED - MAISONETTE TOTAL AREA GF: 55.3 m<sup>2</sup>  
 MAISONETTE TOTAL AREA FF: 56.7 m<sup>2</sup>

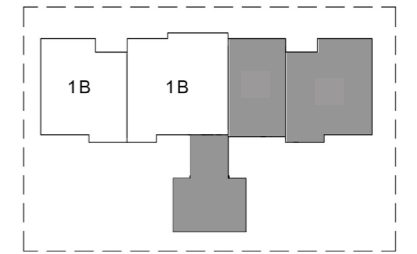


الغدير  
alghadeer

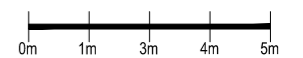
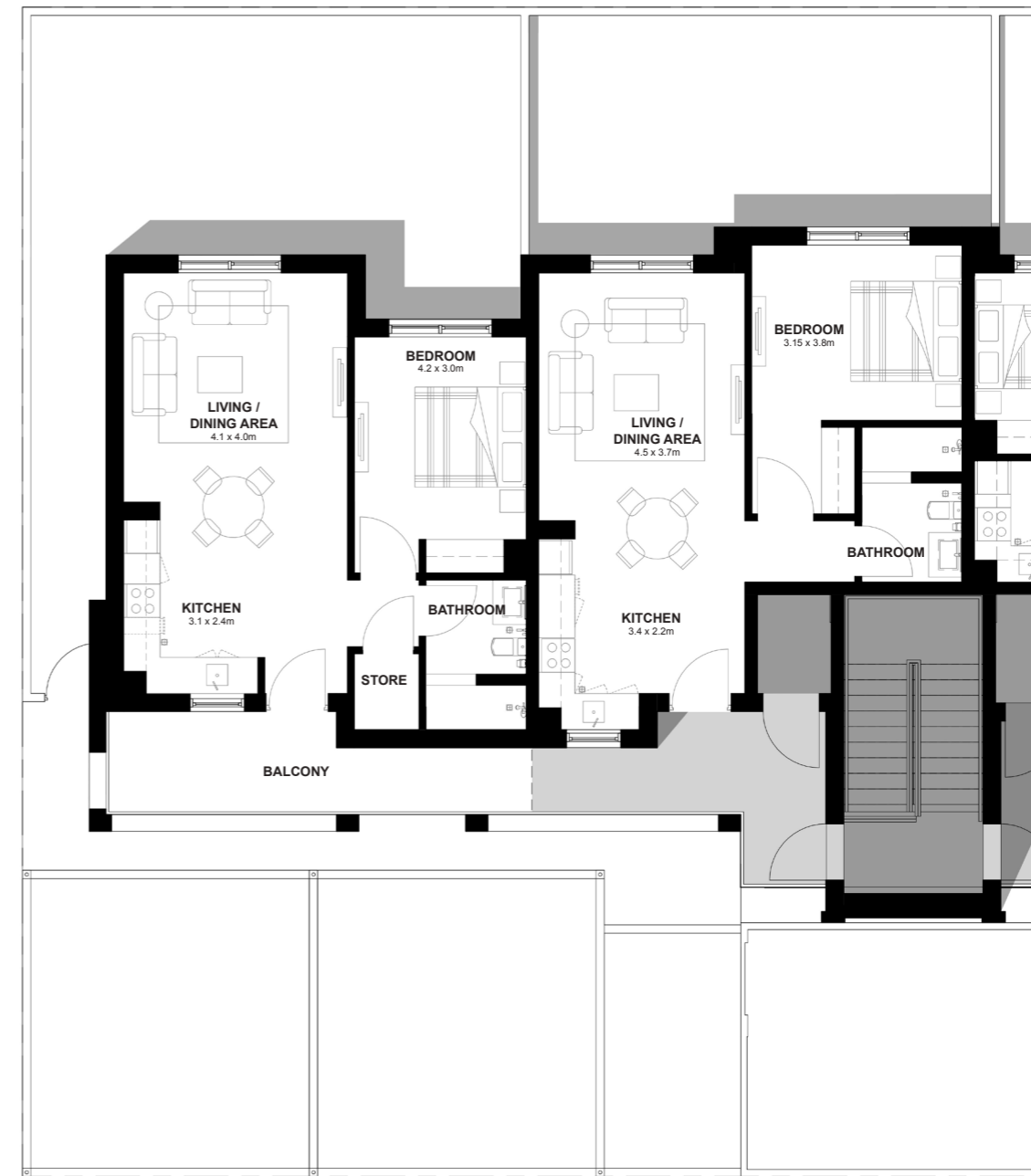
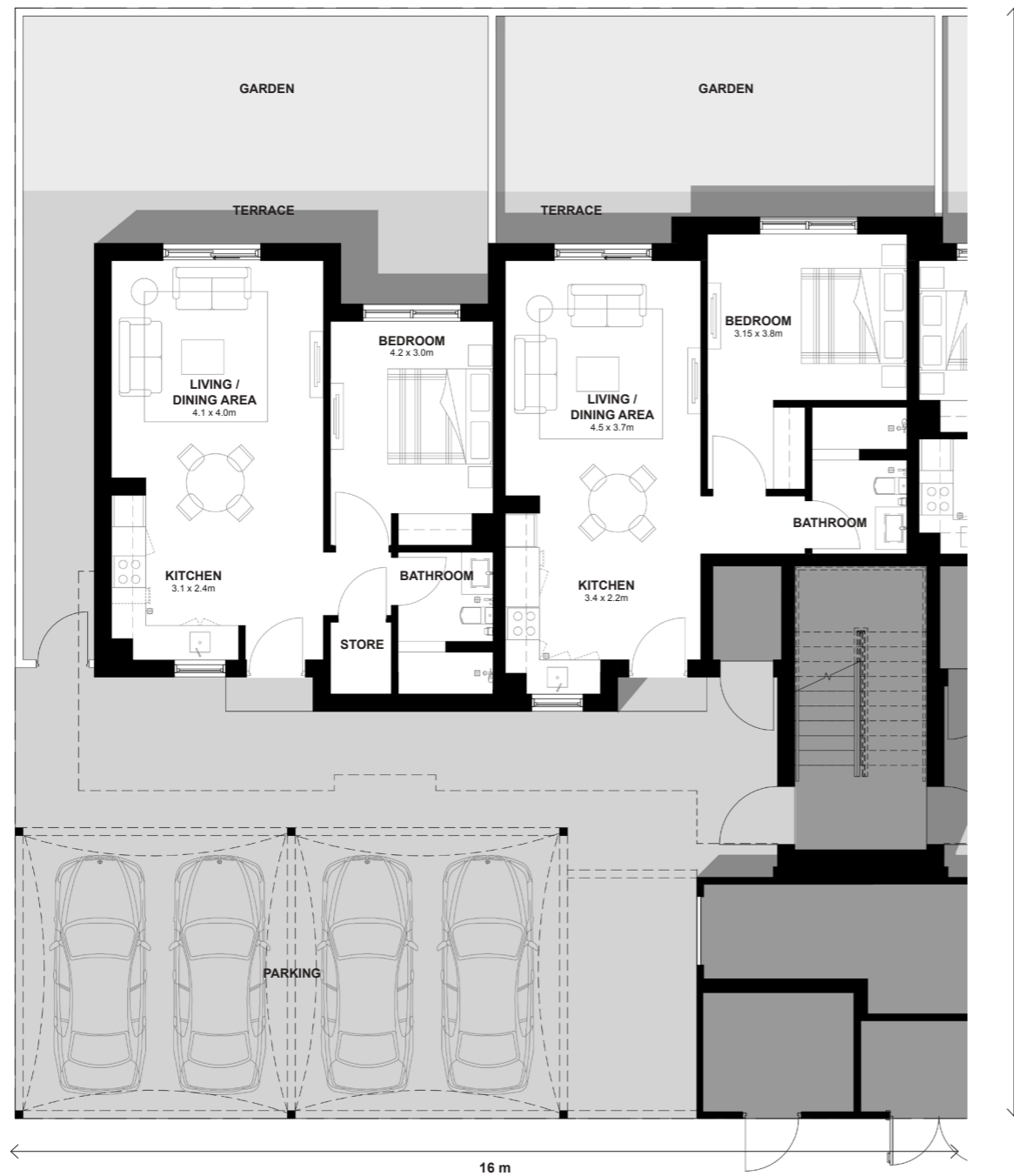
### 1+1+S+1 Bed Maisonette

Ground Floor Plan

First Floor Plan



Key Plan



DISCLAIMER: Note that this floor plan was produced prior to the completion of construction and is indicative only and not to scale. Changes may be made during the development and areas, fittings, finishes and specifications are subject to change without notice in accordance with the provision of the contract of sale. The wardrobe and furniture depicted are not included with any sale and should not be taken to indicate the final positions of power points, TV connections and the like. Prospective purchasers must rely on their own enquiries. Bulkheads necessary for services and structure are not depicted.

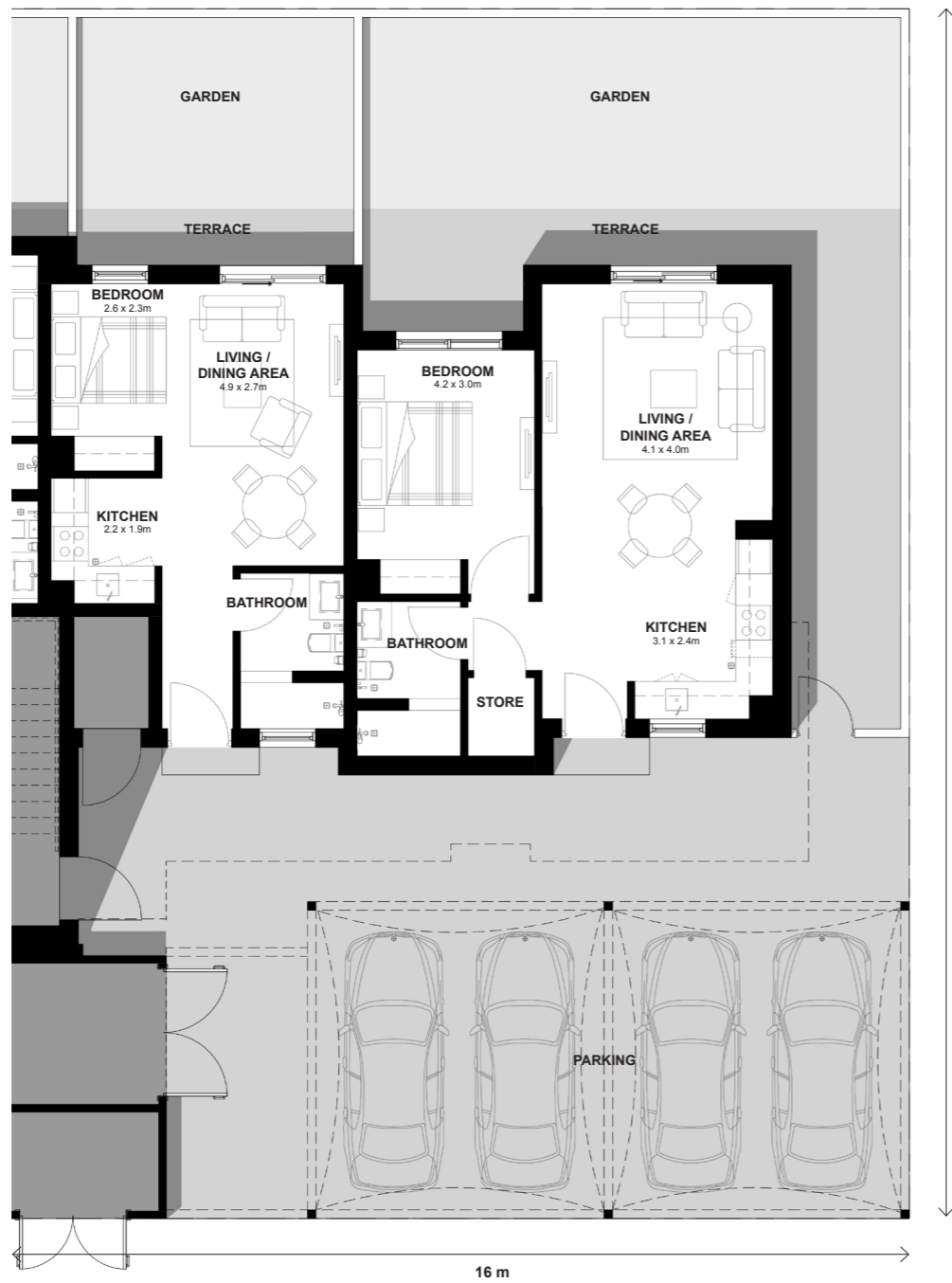
1 BED (END UNIT) - MAISONETTE TOTAL AREA GF: 52.6 m<sup>2</sup>  
 MAISONETTE TOTAL AREA FF: 61.6 m<sup>2</sup>  
 1 BED (MID UNIT) - MAISONETTE TOTAL AREA GF: 52.7 m<sup>2</sup>  
 MAISONETTE TOTAL AREA FF: 52.7 m<sup>2</sup>



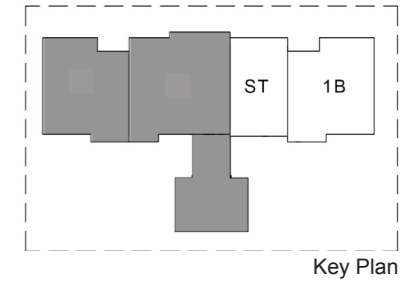
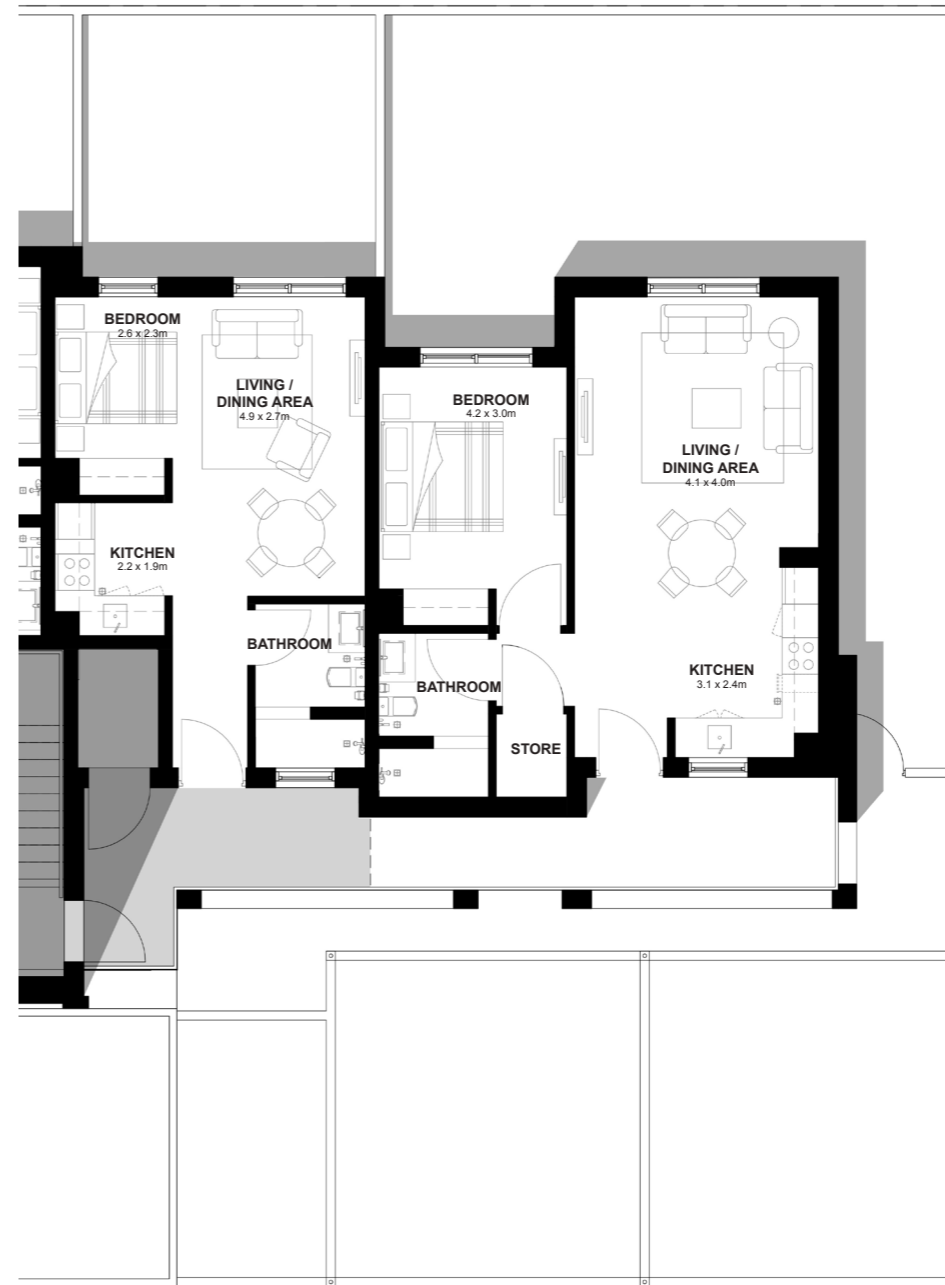
الغدیر  
alghadeer

1+1+S+1 Bed Maisonette

Ground Floor Plan



First Floor Plan



Key Plan



DISCLAIMER: Note that this floor plan was produced prior to the completion of construction and is indicative only and not to scale. Changes may be made during the development and areas, fittings, finishes and specifications are subject to change without notice in accordance with the provision of the contract of sale. The wardrobe and furniture depicted are not included with any sale and should not be taken to indicate the final positions of power points, TV connections and the like. Prospective purchasers must rely on their own enquiries. Bulkheads necessary for services and structure are not depicted.

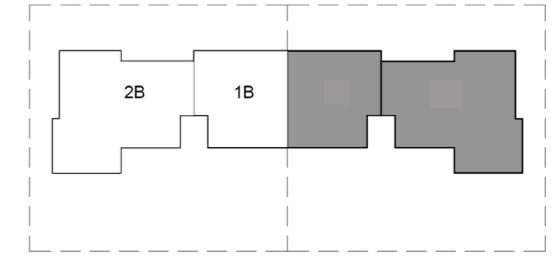
1 BED (END UNIT) - MAISONETTE TOTAL AREA GF: 52.6 m<sup>2</sup>  
 MAISONETTE TOTAL AREA FF: 61.6 m<sup>2</sup>  
 STUDIO - MAISONETTE TOTAL AREA GF: 35 m<sup>2</sup>  
 MAISONETTE TOTAL AREA FF: 35 m<sup>2</sup>



الغدير  
alghadeer

**1+2 Bed Maisonette**

Ground Floor Plan



First Floor Plan

Key Plan



DISCLAIMER: Note that this floor plan was produced prior to the completion of construction and is indicative only and not to scale. Changes may be made during the development and areas, fittings, finishes and specifications are subject to change without notice in accordance with the provision of the contract of sale. The wardrobe and furniture depicted are not included with any sale and should not be taken to indicate the final positions of power points, TV connections and the like. Prospective purchasers must rely on their own enquiries. Bulkheads necessary for services and structure are not depicted.

2 BED - MAISONETTE TOTAL AREA GF: 86.3 m<sup>2</sup>  
MAISONETTE TOTAL AREA FF: 98.4 m<sup>2</sup>

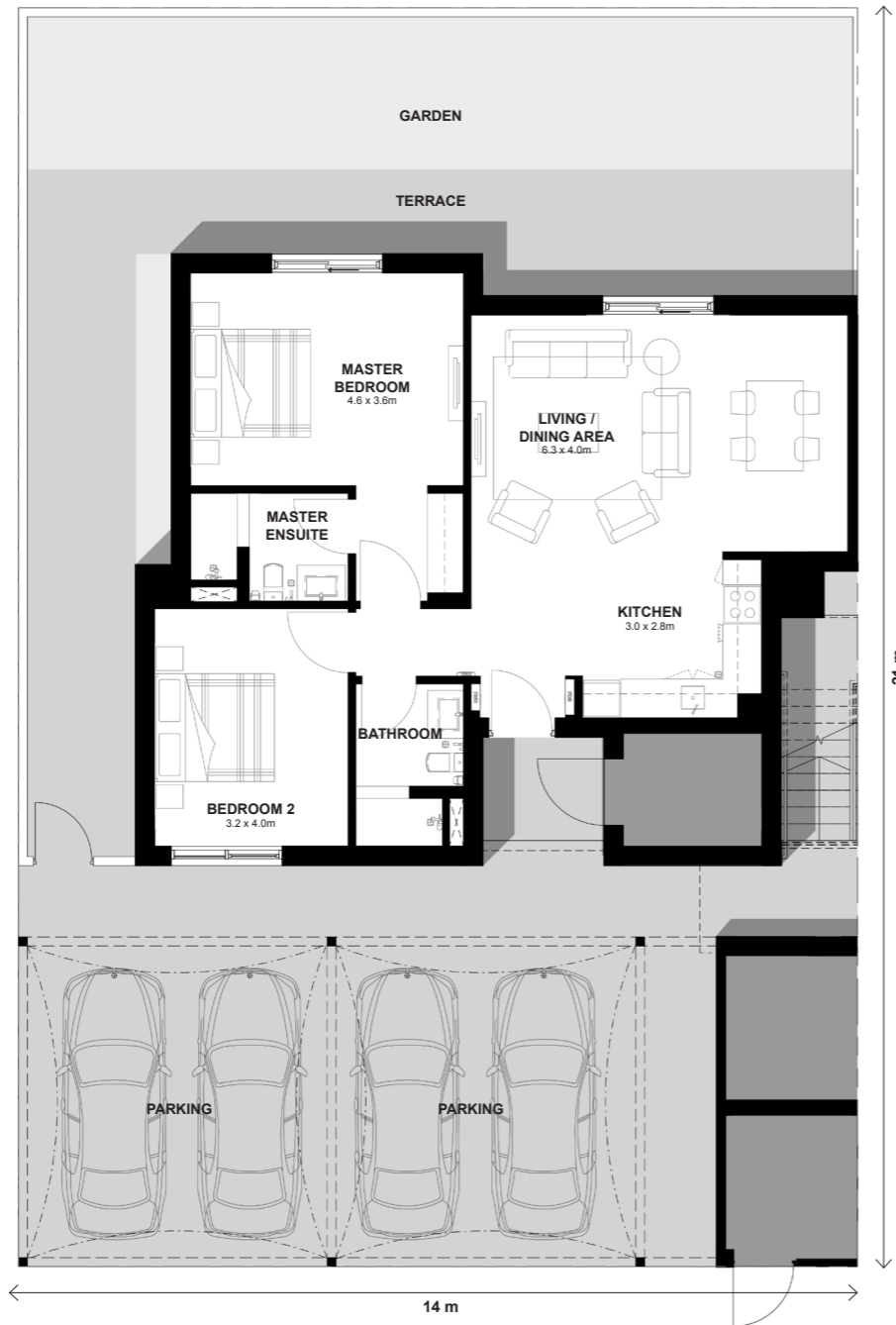
1 BED - MAISONETTE TOTAL AREA GF: 55.4 m<sup>2</sup>  
MAISONETTE TOTAL AREA FF: 67 m<sup>2</sup>



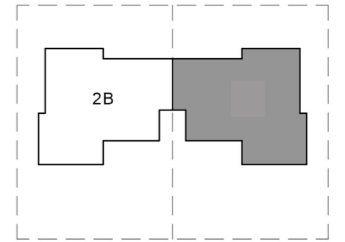
الغدير  
alghadeer

### 2 Bed Maisonette

Ground Floor Plan



First Floor Plan



Key Plan



DISCLAIMER: Note that this floor plan was produced prior to the completion of construction and is indicative only and not to scale. Changes may be made during the development and areas, fittings, finishes and specifications are subject to change without notice in accordance with the provision of the contract of sale. The wardrobe and furniture depicted are not included with any sale and should not be taken to indicate the final positions of power points, TV connections and the like. Prospective purchasers must rely on their own enquiries. Bulkheads necessary for services and structure are not depicted.

MAISONETTE TOTAL AREA GF: 85.2 m<sup>2</sup>  
MAISONETTE TOTAL AREA FF: 99 m<sup>2</sup>

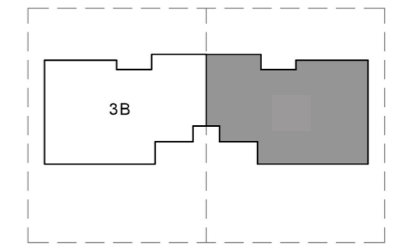


الغدير  
alghadeer

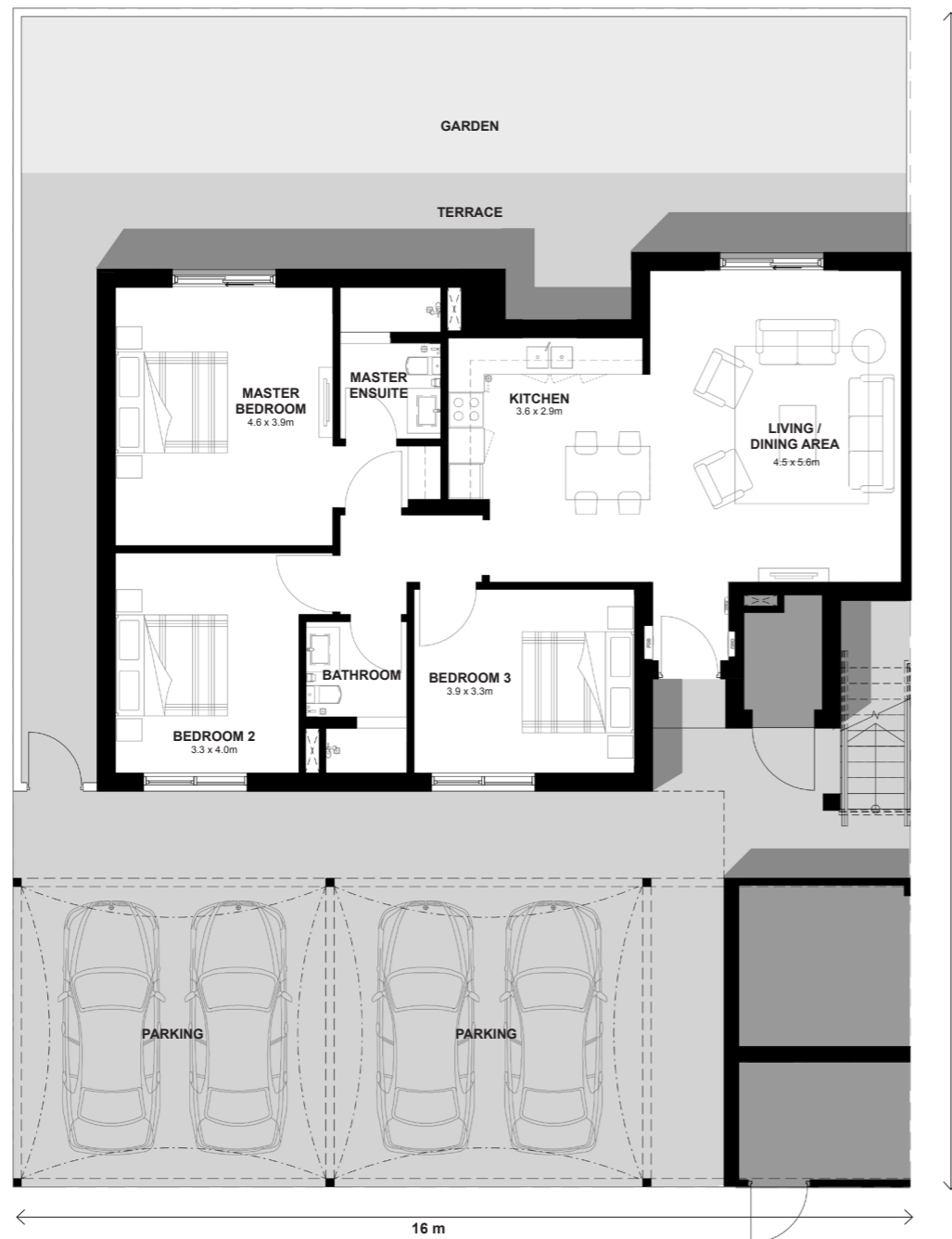
### 3 Bed Maisonette

Ground Floor Plan

First Floor Plan

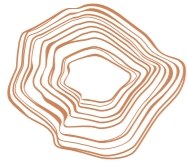


Key Plan



DISCLAIMER: Note that this floor plan was produced prior to the completion of construction and is indicative only and not to scale. Changes may be made during the development and areas, fittings, finishes and specifications are subject to change without notice in accordance with the provision of the contract of sale. The wardrobe and furniture depicted are not included with any sale and should not be taken to indicate the final positions of power points, TV connections and the like. Prospective purchasers must rely on their own enquiries. Bulkheads necessary for services and structure are not depicted.

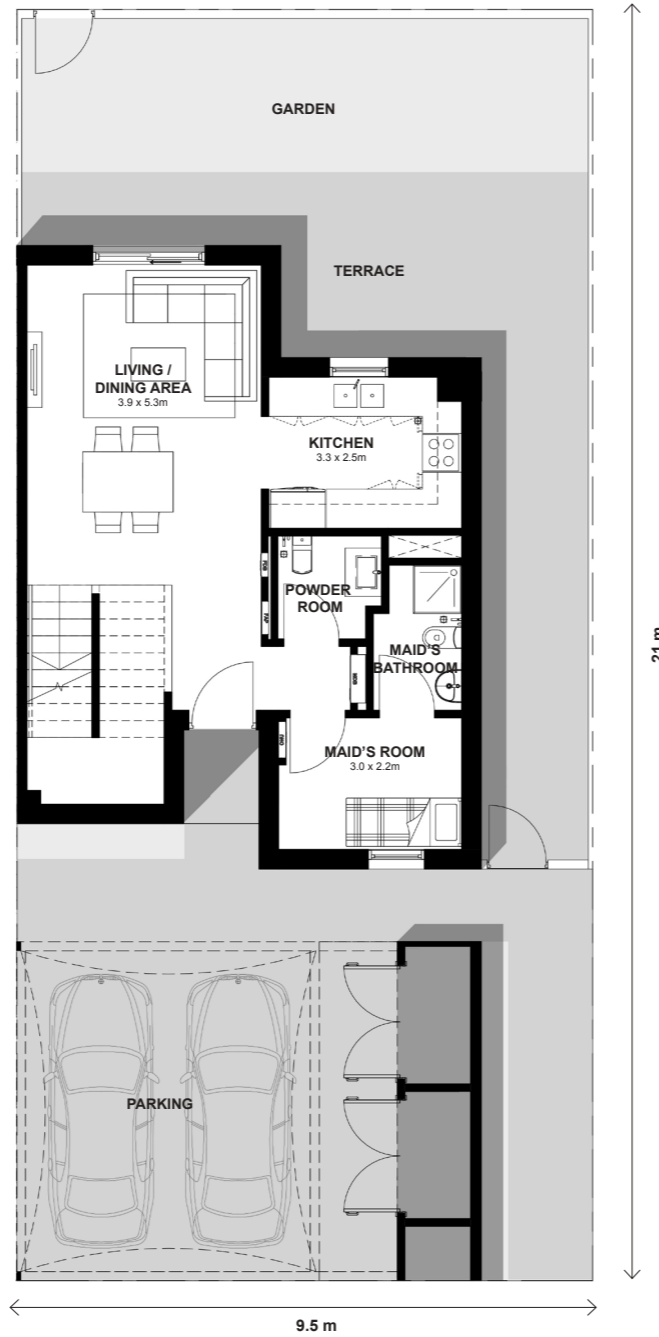
MAISONETTE TOTAL AREA GF: 105.6 m<sup>2</sup>  
MAISONETTE TOTAL AREA FF: 105.6 m<sup>2</sup>



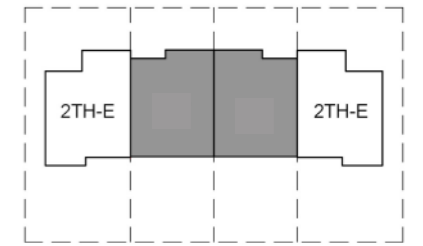
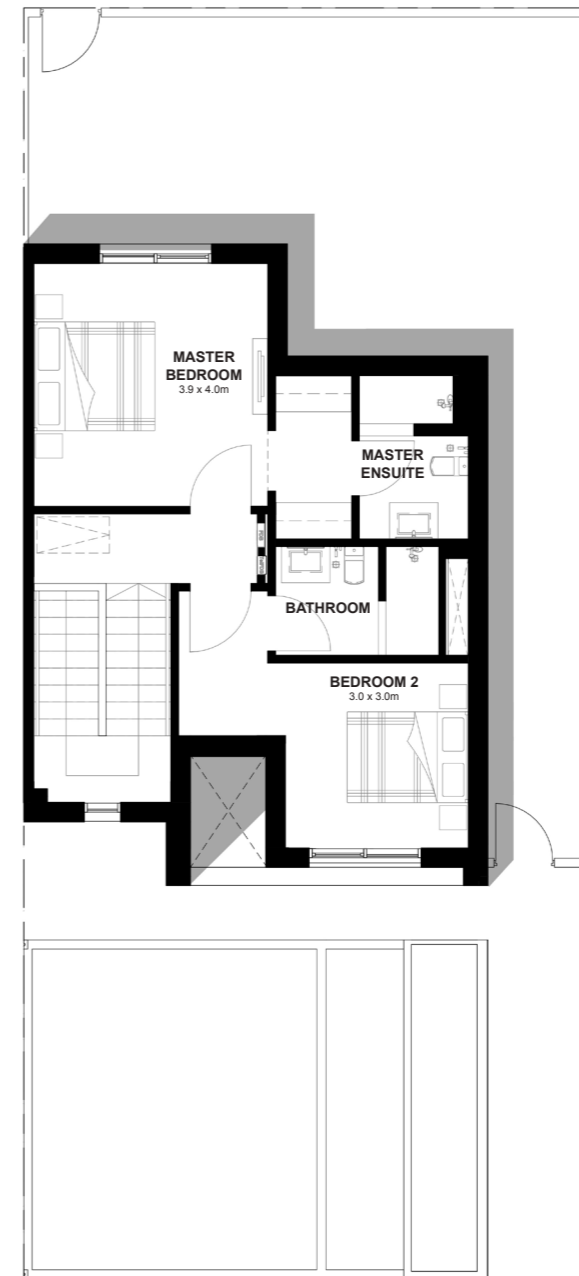
الغدير  
alghadeer

### 2 Bed Townhouse (End Unit)

Ground Floor Plan



First Floor Plan



Key Plan



DISCLAIMER: Note that this floor plan was produced prior to the completion of construction and is indicative only and not to scale. Changes may be made during the development and areas, fittings, finishes and specifications are subject to change without notice in accordance with the provision of the contract of sale. The wardrobe and furniture depicted are not included with any sale and should not be taken to indicate the final positions of power points, TV connections and the like. Prospective purchasers must rely on their own enquiries. Bulkheads necessary for services and structure are not depicted.

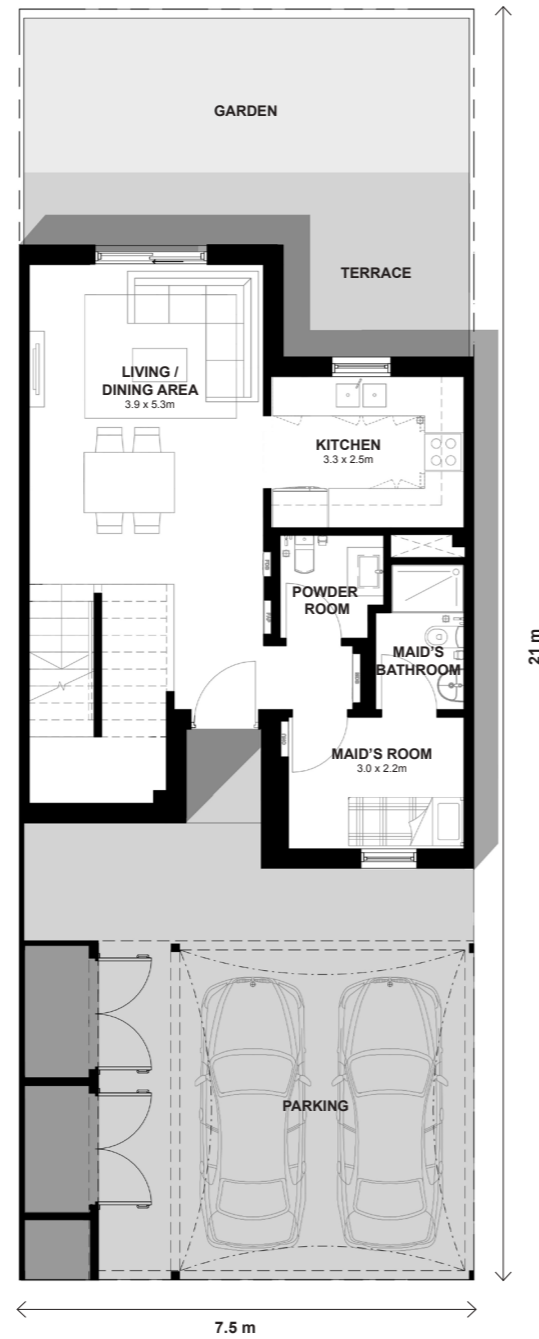
TOWNHOUSE TOTAL AREA: 127.3 m<sup>2</sup>



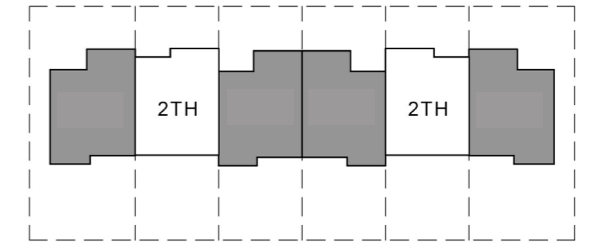
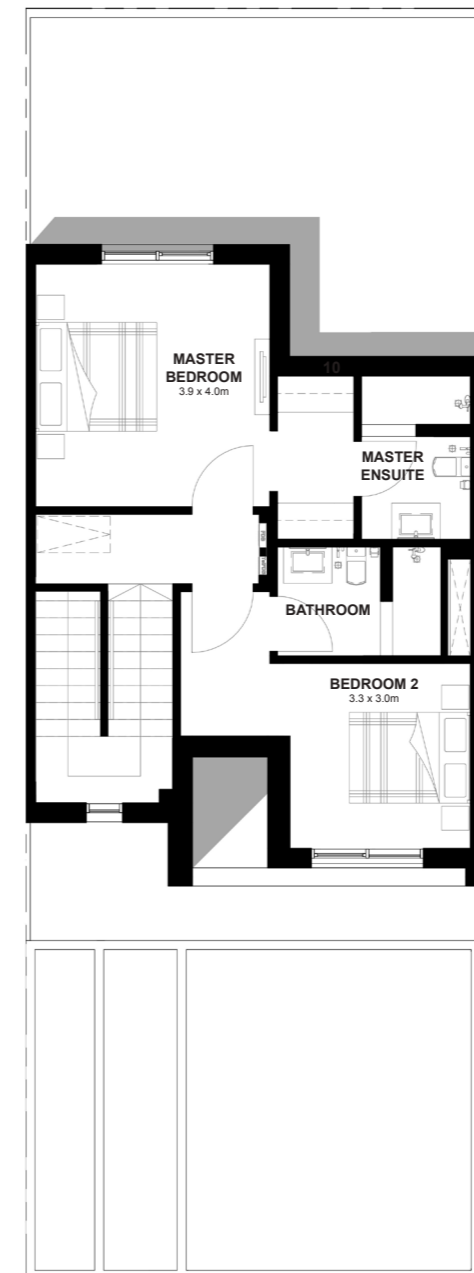
الغدير  
alghadeer

### 2 Bed Townhouse (Mid Unit)

Ground Floor Plan



First Floor Plan



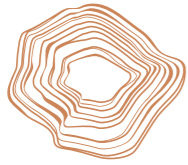
Key Plan



DISCLAIMER: Note that this floor plan was produced prior to the completion of construction and is indicative only and not to scale. Changes may be made during the development and areas, fittings, finishes and specifications are subject to change without notice in accordance with the provision of the contract of sale. The wardrobe and furniture depicted are not included with any sale and should not be taken to indicate the final positions of power points, TV connections and the like. Prospective purchasers must rely on their own enquiries. Bulkheads necessary for services and structure are not depicted.

TOWNHOUSE TOTAL AREA: 124.6 m<sup>2</sup>

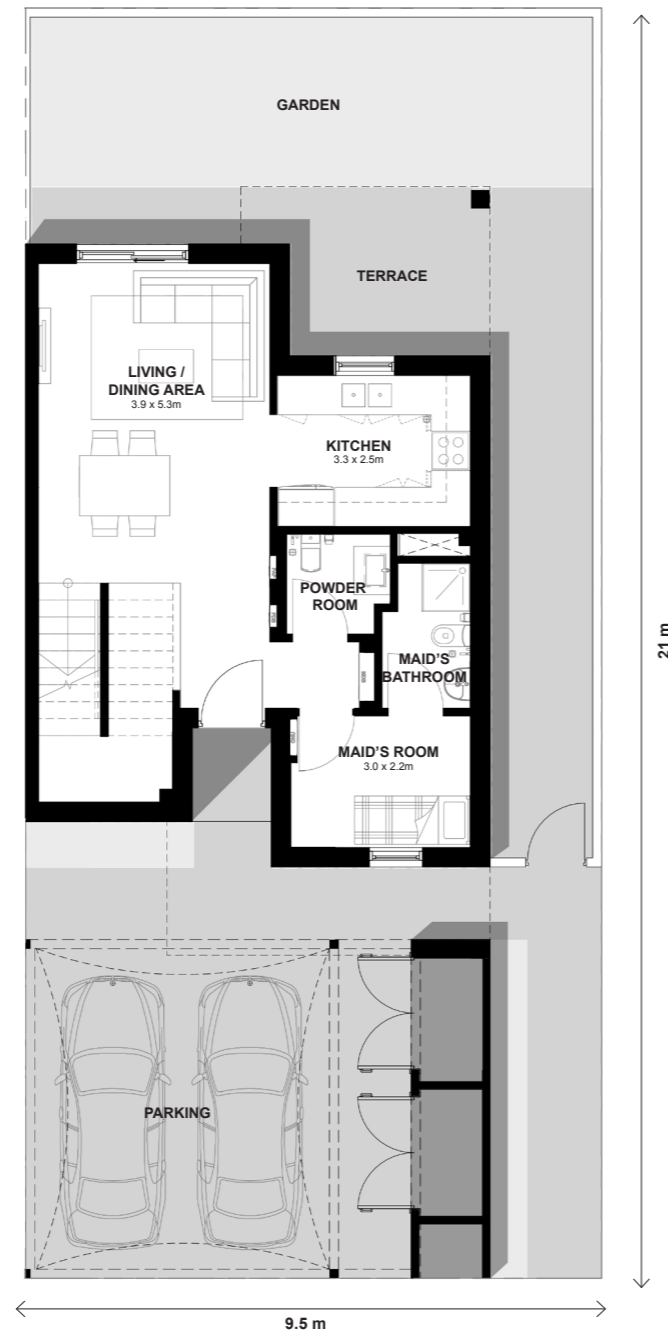




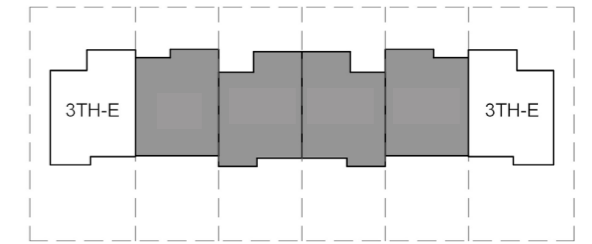
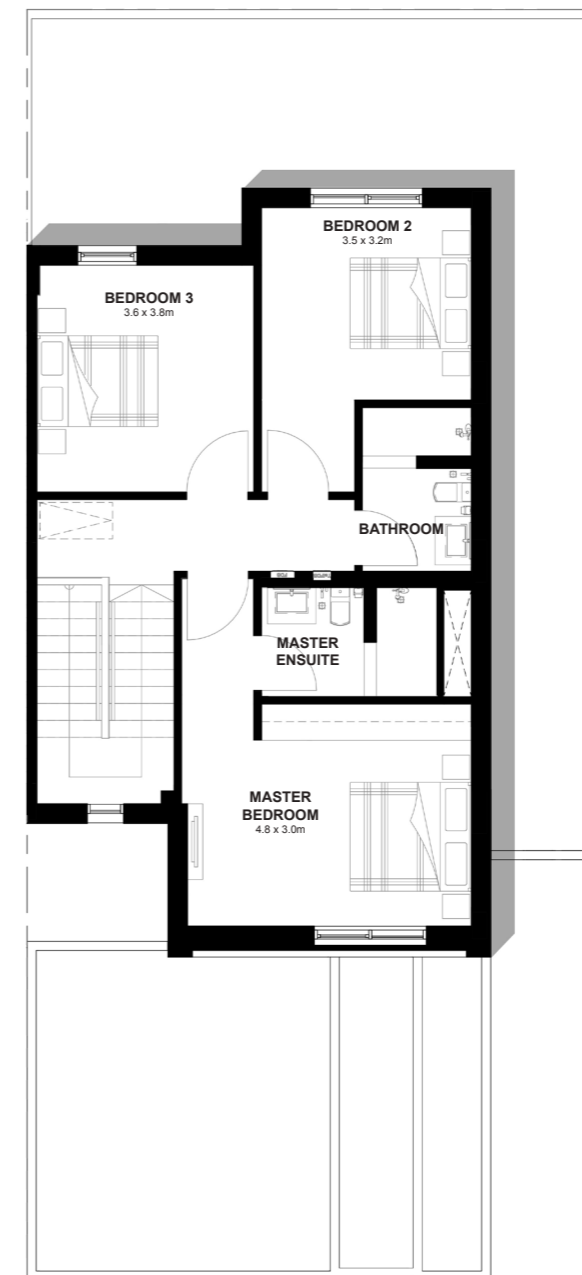
الغدير  
alghadeer

### 3 Bed Townhouse (End Unit)

Ground Floor Plan



First Floor Plan



Key Plan



DISCLAIMER: Note that this floor plan was produced prior to the completion of construction and is indicative only and not to scale. Changes may be made during the development and areas, fittings, finishes and specifications are subject to change without notice in accordance with the provision of the contract of sale. The wardrobe and furniture depicted are not included with any sale and should not be taken to indicate the final positions of power points, TV connections and the like. Prospective purchasers must rely on their own enquiries. Bulkheads necessary for services and structure are not depicted.

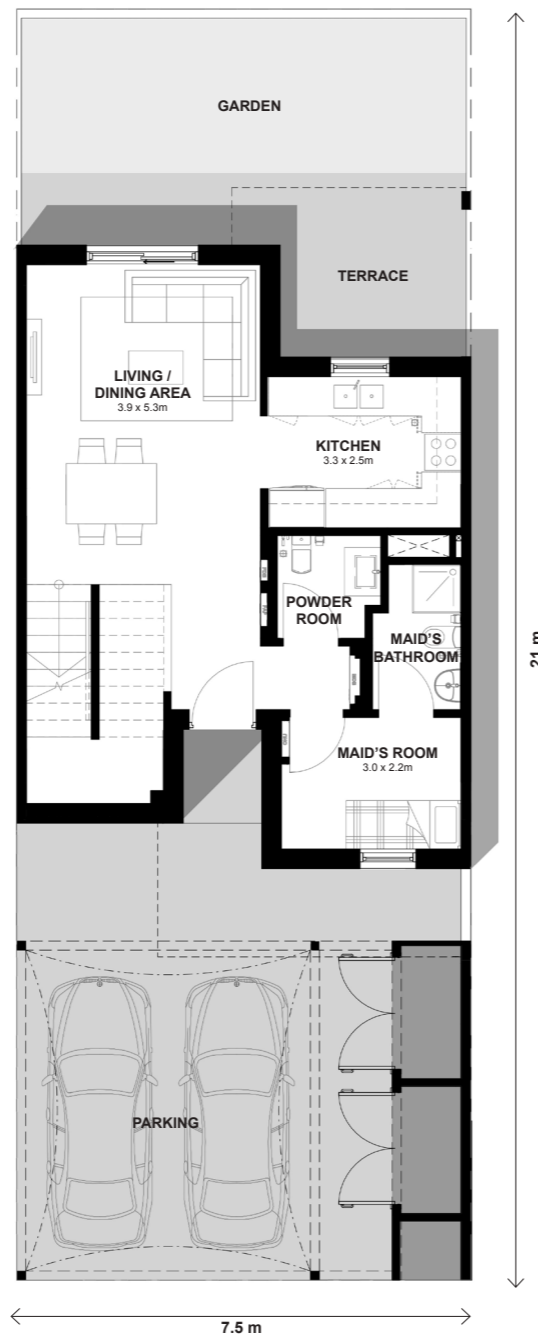
TOWNHOUSE TOTAL AREA: 155.5 m<sup>2</sup>



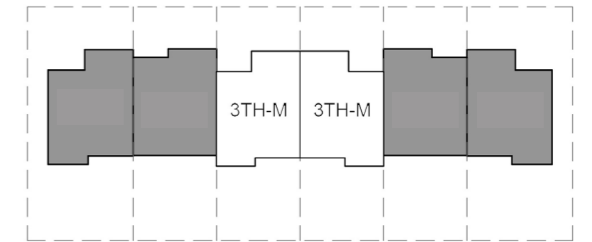
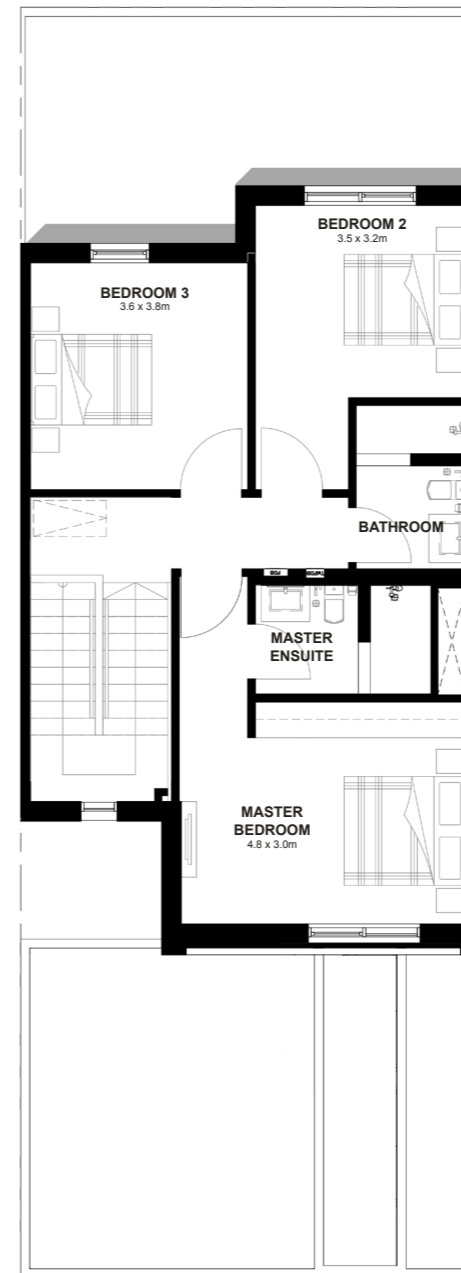
الغدير  
alghadeer

### 3 Bed Townhouse (Mid Unit)

Ground Floor Plan



First Floor Plan



Key Plan



TOWNHOUSE TOTAL AREA: 152 m<sup>2</sup>

DISCLAIMER: Note that this floor plan was produced prior to the completion of construction and is indicative only and not to scale. Changes may be made during the development and areas, fittings, finishes and specifications are subject to change without notice in accordance with the provision of the contract of sale. The wardrobe and furniture depicted are not included with any sale and should not be taken to indicate the final positions of power points, TV connections and the like. Prospective purchasers must rely on their own enquiries. Bulkheads necessary for services and structure are not depicted.

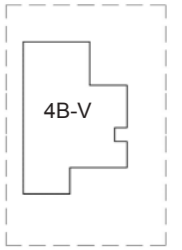


الغدير  
alghadeer

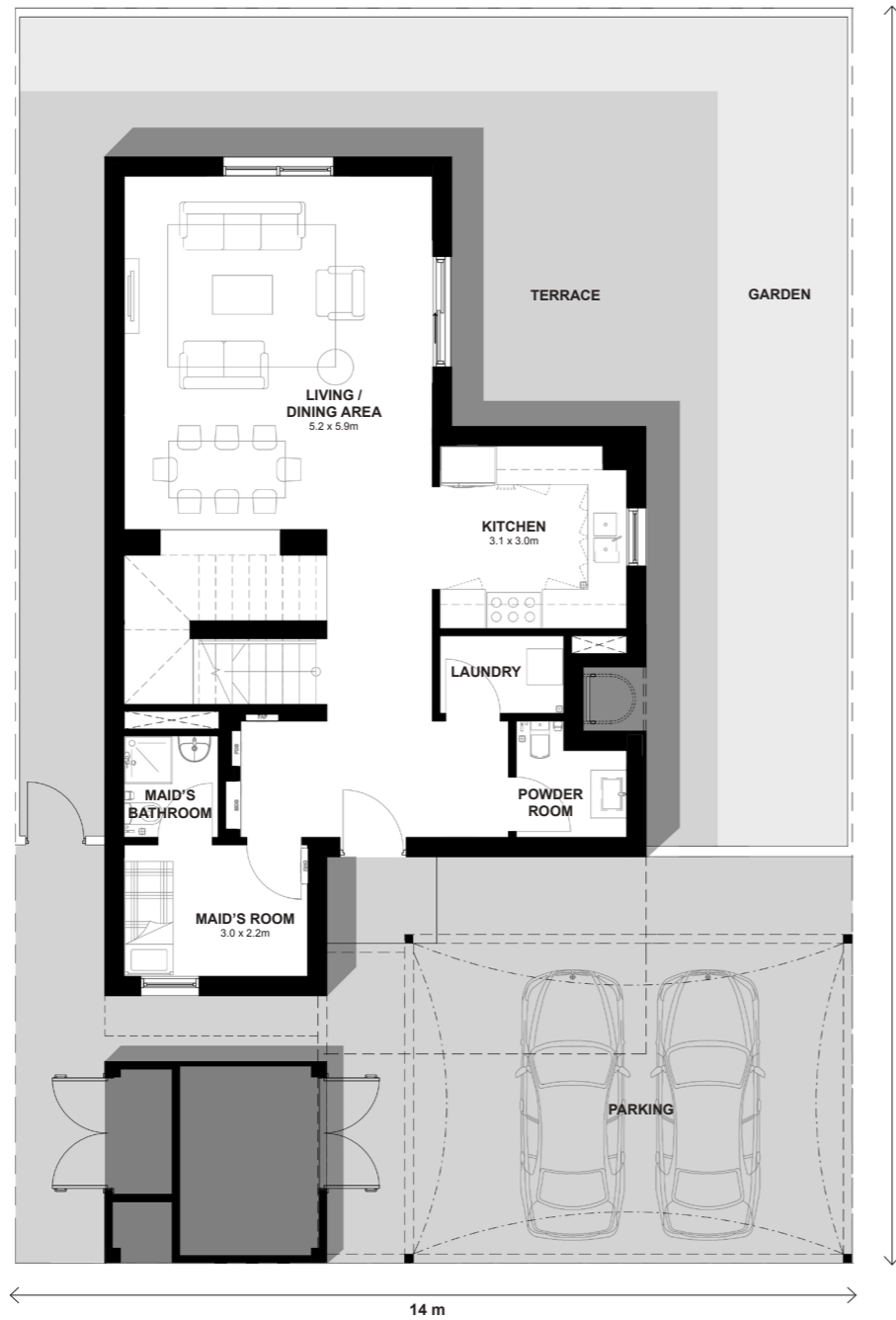
### Four Bed Villa (Detached)

Ground Floor Plan

First Floor Plan



Key Plan



DISCLAIMER: Note that this floor plan was produced prior to the completion of construction and is indicative only and not to scale. Changes may be made during the development and areas, fittings, finishes and specifications are subject to change without notice in accordance with the provision of the contract of sale. The wardrobe and furniture depicted are not included with any sale and should not be taken to indicate the final positions of power points, TV connections and the like. Prospective purchasers must rely on their own enquiries. Bulkheads necessary for services and structure are not depicted.

VILLA TOTAL AREA: 206.3 m<sup>2</sup>